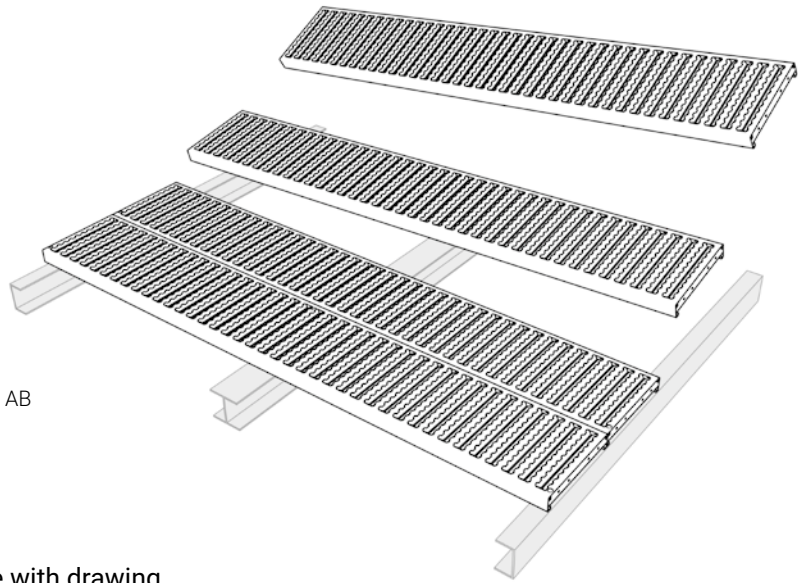


# INSTALLATION INSTRUCTION PLANK TYPE FLOORING

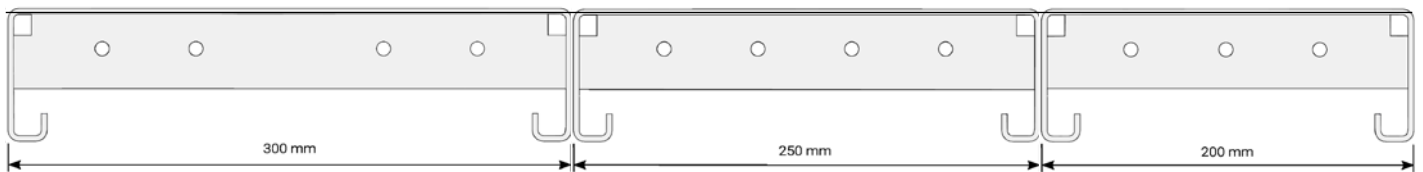
**WELAND**

Carefully read through this instruction in its entirety before starting installation.

The material supplied must be checked against the shipping specification and delivery note. Weland AB must be notified of any discrepancies in the delivery before installation begins.

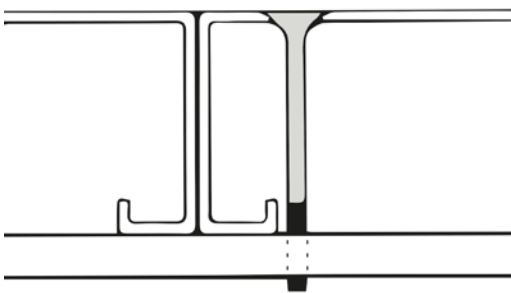


## Lay out plank type flooring in accordance with drawing



Plank type flooring is available in three widths - 200, 250, and 300 mm. Laying planks of different widths next to each other, you can get the total width you require. Plank type flooring can be laid in 50 mm steps from widths of 200 mm. All our plank type flooring is 48 mm high.

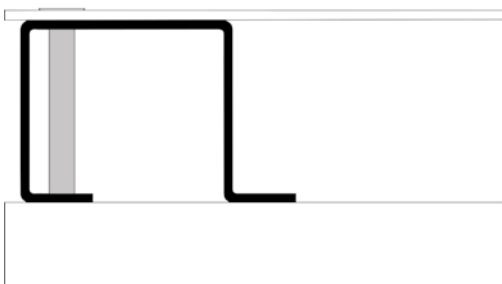
## Fixing



Fixing type A

Thickness of support structure	Drill size
0-4.0 mm	Ø 5.45 mm
4.0-6.5 mm	Ø 5.50 mm
6.5-10 mm	Ø 5.55 mm
> 10 mm	Ø 5.60 mm

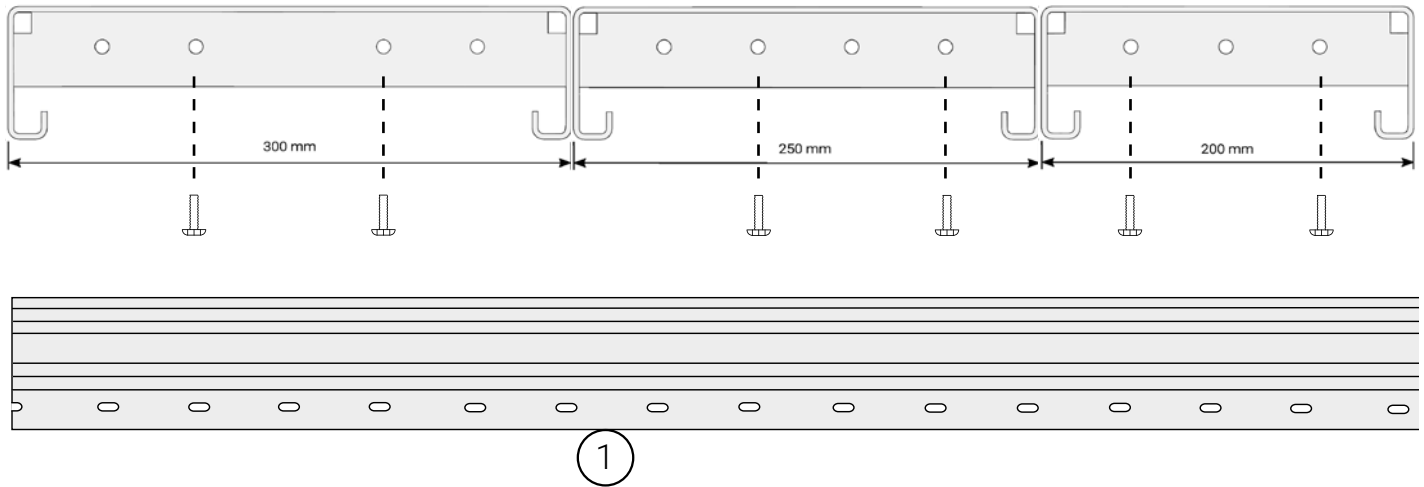
Plank profiles are attached using a screw in each joint in the support structure. Attached using self-tapping special screw MFT TAPTITE M6x65 Zn/ni.



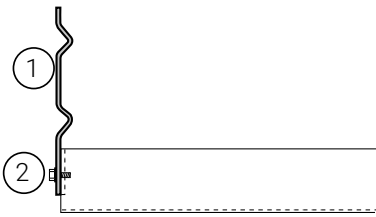
Fixing type B

In instances where profile LU43 is used, screw the plank profile and LU43 through both the plank and LU43 profile. Attached using self-tapping special screw MFT TAPTITE M6x65 Zn/ni. Profile LU43 is to be used as reinforcement in instances where a support edge has been cut away, longitudinal cutting of the plank.

## Installation of kick strips on plank type flooring



Kick strip pos. 1, has been made to be installed on plank type flooring. Pos. 2. The kick strip is installed against the end of the plank type flooring using 2 screws per plank M6 SF DUO-TAPTITE 6 x 12 FZB (thread-pressed) Pos. 3. By drilling  $\varnothing$  5.5 mm holes in the long side with 1.5 holes per metre, the kick strip can be secured in position along the side using M6 SF DUO-TAPTITE 6 x 12 FZB screws (thread-pressed). To install a kick strip on this side, holes must be drilled in the longitudinal side of the plank. Hole  $\varnothing$  5.5 mm. Ideally, the kick strip should be installed on the plank before the plank is fitted.



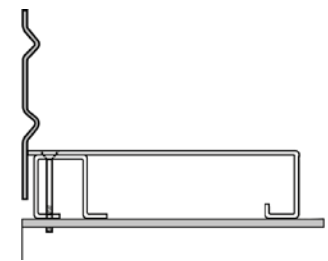
### Kick strip on end

The kick strip is to be installed in existing holes in the ends of the planks. Cut the kick strip according to the holes in the plank. The number of plank attachments to the supporting structure can be reduced to approx. 1 screw/m.



### Kick strip along longitudinal side

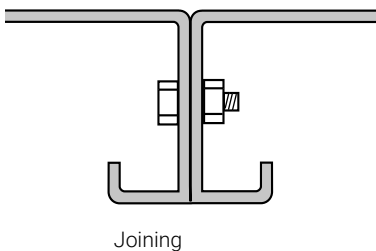
To install a kick strip on this side,  $\varnothing$  5.5 holes must be drilled in the longitudinal side of the plank. Ideally, the kick strip should be installed on the plank before it is fitted.



### Kick strip welded to plank type flooring

Once the kick strip has been welded to the longitudinal side of plank type flooring, install an LU 43 beam connection under the plank. It is then to be screwed securely to the support structure.

### Connection

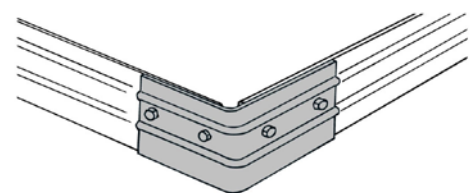


Joining

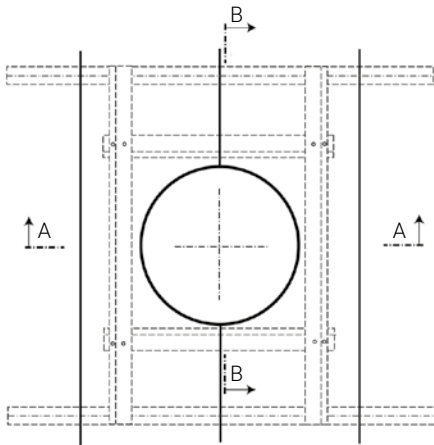
Connection is to be used for spans in excess of 1500 mm. Both carrier lines work in tandem, causing sag differences between planks to disappear. Use  $\varnothing$  6 mm screw. This installation method is not used for spans less than 1500 mm.

### Corner for kick strip

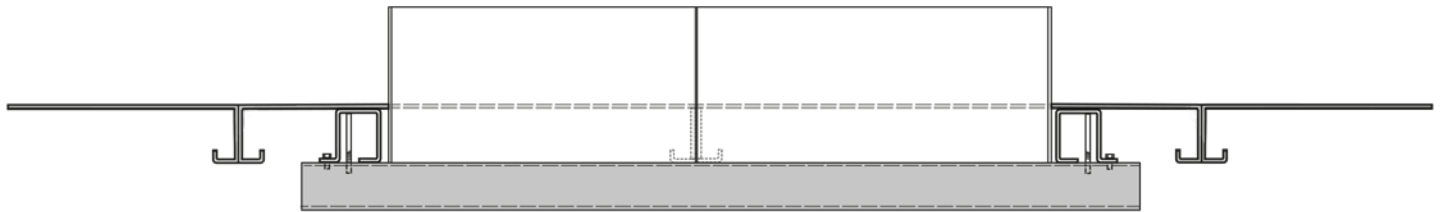
90° corner for kick strip, available for both outer and inner corners.



## Installation of plank type flooring at chasing and edges

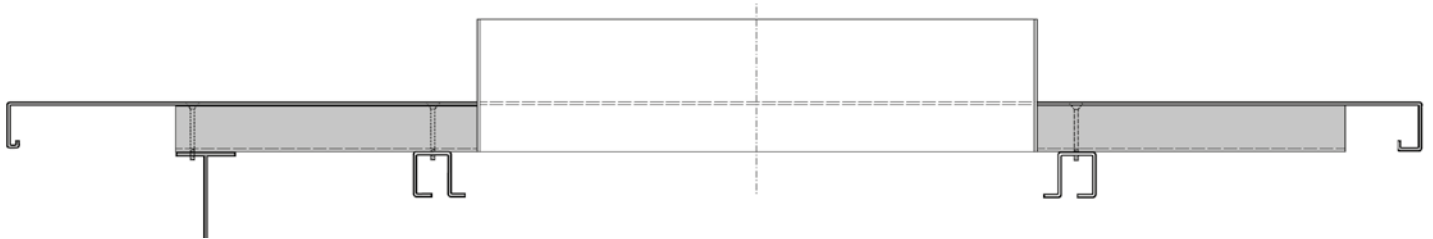


Example of chasing where the notch in the plank goes through and cuts the plank's carrier lines. Carrying is ensured by installing LU 43 as shown in the figure.



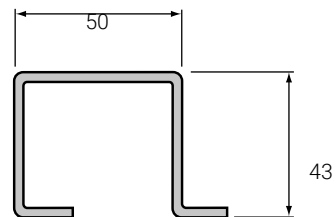
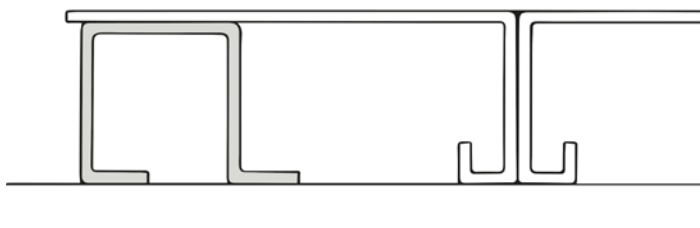
### Cross section A - A

Shows the connection of LU 43 in order to achieve bearing of a cut supporting line in the plank.



### Cross section B - B

Shows LU 43 attached in supporting beam.



LU 43 is to be used as a supporting profile in chasing and in edges.

LU 43 is to be used in notches and replaces the plank's supporting line.



weland.com